



ALUMINUM SYSTEMS



ALUMINUM SYSTEMS

THE **ALUMINUM** SYSTEM REDEFINES CONTEMPORARY STYLE AS A BIFOLD DOOR OR WINDOW.

ITS CLEAN DESIGN FEATURES A NARROW 2 3/4" STILE AND RAIL PROFILE ALLOWING FOR MORE GLASS AND LIGHT. PERFECT FOR RESIDENTIAL AND COMMERCIAL PROJECTS IN MODERATE CLIMATES OR AS AN INTERIOR SPACE DIVIDER, THE **ALUMINUM** FOLDING SYSTEM HAS STRENGTH AND SECURITY WITH A VALUE PRICE.

FEATURES

THE **ALUMINUM** SERIES FEATURES & BENEFITS:

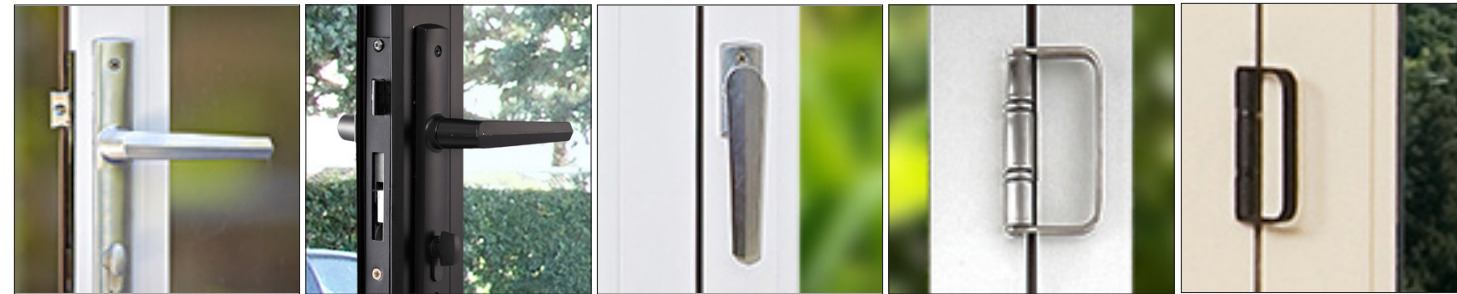
- SQUARE DETAILING THAT IS SIMPLE AND MODERN
- CONCEALED MULTI-POINT LOCKING SYSTEM FOR EASE OF OPERATION AND SECURITY
- EXTRUDED ALUMINUM PANEL WALL THICKNESS OF UP TO 1/4"
- SINGLE LITE PANELS UP TO 10' TALL WITHOUT THE NEED FOR A HORIZONTAL MULLION
- 10" TALL BOTTOM RAIL , LOW RISE SILL AND OTHER OPTIONS FOR COMMERCIAL/ADA REQUIREMENTS
- 1/4" TO 1" GLAZING OPTIONS
- WHITE, CLEAR AND DARK BRONZE ANODIZED IN-STOCK FINISHES OR CREATE A DISTINCTIVE COLOR
- CUSTOM SIMULATED DIVIDING LITE (SDL) DESIGNS
- CONTEMPORARY DAILY DOOR HANDLE TRIMSET AND LOCK INCLUDED

BENEFITS

- MAXIMIZE THE AMOUNT OF GLASS FOR MORE NATURAL DAYLIGHT
- WHITE, CLEAR AND DARK BRONZE ANODIZED FINISHES WILL MATCH MOST ALUMINUM WINDOWS
- NO FINISHING REQUIRED AND LOW MAINTENANCE
- STRENGTH AND RIGIDITY FOR OVERSIZED PANELS
- WIDE RANGE OF GLAZING OPTIONS FOR IMPROVED THERMAL PERFORMANCE , SAFETY PROTECTION AND PRIVACY
- COMBINE WITH OUR SCREEN SYSTEMS FOR YEAR ROUND COMFORT

HARDWARE

LaCANTINA DOORS SYSTEMS ARE BUILT TO LAST AND FEATURE THE HIGHEST QUALITY HARDWARE FOR EFFORTLESS PERFORMANCE. **LaCANTINA DOORS** FOLDING HARDWARE, HANDLE AND LOCKS, ARE AVAILABLE IN STAINLESS STEEL AND BRONZE FINISHES.



ARIA MULTI-POINT HANDLE STAINLESS STEEL

ARIA MULTI-POINT HANDLE BRONZE

TWIN BOLT LEVER STAINLESS STEEL

PULL HANDLE STAINLESS STEEL

PULL HANDLE BRONZE

GLASS

DUAL GLAZED TEMPERED GLASS IS STANDARD ON ALL **LaCANTINA DOOR** SYSTEMS. FOR BETTER ENERGY PERFORMANCE, WE FEATURE CARDINAL'S LoE GLASS INCLUDING LoE-272 AND LoE-366.

MOST COMMERCIALY AVAILABLE GLAZING CAN BE USED, INCLUDING TINTED, OBSCURE, LAMINATED AND SINGLE GLAZED. LAMINATED GLASS WITH SGP INTERLAYER CAN BE ADDED FOR SECURITY OR IMPACT PROTECTION.

SHOULD YOUR PROJECT REQUIRE CUSTOMIZED GLASS PLEASE CONTACT US TO VERIFY AVAILABILITY.



Cardinal Coated Glass

COLORS

LaCANTINA DOORS OFFER A WIDE RANGE OF IN-STOCK, OPTIONAL AND CUSTOM COLORS FOR THE EXTERIOR AND INTERIOR ALUMINUM OF YOUR BIFOLDING DOOR SYSTEM.

LaCANTINA DOORS FOLDING DOORS SYSTEMS ARE AVAILABLE IN 3 IN-STOCK COLORS:

IN-STOCK COLORS



CLEAR ANODIZED

BRONZE ANODIZED

WHITE

OPTIONAL COLORS*

LaCANTINA DOORS OFFER A WIDE RANGE OF 19 OF THE MOST POPULAR COLORS IN THE MARKETPLACE TODAY:



BLACK

BONE WHITE

BOYSENBERRY

BRICK RED

CHARCOAL

CHESTNUT BRONZE

COLONIAL GRAY

DARK CHOCOLATE

FASHION GRAY

FAST TRACK WHITE

HARTFORD GREEN

MEDIUM BRONZE

MESA RED

PATINA

PEBBLE GRAY

ROSEWOOD

SANDTONE

STATUARY BRONZE

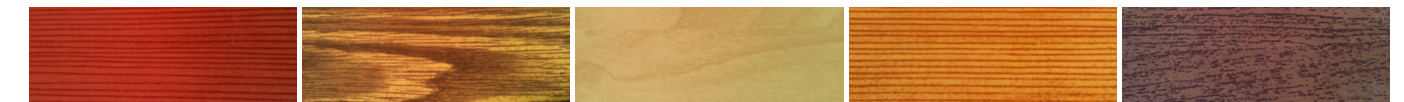
TERRATONE

CUSTOM COLORS*

LaCANTINA DOORS OFFERS CUSTOM COLOR MATCHING TO VIRTUALLY ANY COLOR. A 2-COAT 70% KYNAR IS THE STANDARD FINISH. MULTI-COAT, METALLIC AND PREMIUM POWDERCOAT FINISHES CAN BE SPECIFIED FOR YOUR PROJECT NEEDS.

THESE 6 POPULAR DECORAL WOOD GRAIN POWDERCOAT FINISHES ARE AVAILABLE. CONTACT US FOR THE COMPLETE RANGE.

REAL WOOD LOOK



RED DOUGLAS FIR

LIGHT NATURAL OAK

LIGHT MAPLE

LIGHT DOUGLAS FIR

LIGHT WALNUT

DARK CHERRY

*ACTUAL COLORS WILL VARY FROM THE PRINT. PLEASE REQUEST PAINT SWATCH SAMPLES

SIZING

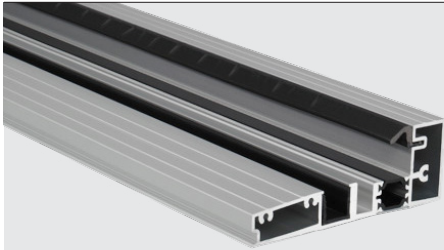
OUR BIFOLD DOOR SYSTEMS ARE AVAILABLE IN THE MOST POPULAR SIZES AND OPENINGS. **LaCANTINA DOORS** POPULAR STANDARD SIZES ARE 7' AND 8' TALL AND 9', 12', 15' AND 18' WIDE WITH A 35" PANEL WIDTH. WE SPECIALIZE IN CUSTOM "MADE TO MEASURE" SYSTEMS WHICH ARE AVAILABLE UP TO 52' WIDE AND 10' TALL WITH A MAXIMUM PANEL WIDTH OF 39".

CONFIGURATIONS

LaCANTINA DOORS BIFOLD DOOR SYSTEMS OFFER A RANGE OF CONFIGURATIONS UP TO 16 PANELS, 8 IN EACH DIRECTION, INCLUDING A 90° ZERO POST SYSTEM. VISIT WWW.LACANTINADOORS.COM FOR THE COMPLETE CONFIGURATION CHART AND LISTING OR CONTACT US TO DISCUSS HOW OUR DOOR SYSTEMS CAN MEET YOUR PROJECT NEEDS.

SILL CONSIDERATIONS

LaCANTINA DOORS OFFERS A CHOICE OF SILL OPTIONS THAT PERFORM FOR A RANGE OF CONDITIONS. IDENTIFY WHAT SILL OPTION AND FLOOR TRANSITION BEST MEET YOUR NEEDS.



THE **WEATHER RESISTANT** SILL IS OUR STANDARD SILL OPTION AND PROVIDES EFFECTIVE WEATHER SEALING FOR EXTERIOR APPLICATIONS SIMILAR TO RAISED SILLS TYPICAL OF SLIDING OR SWINGING PATIO DOORS. THE SILL IS INSTALLED ON TOP OF THE SUB FLOOR AND THEN THE FINISHED FLOOR IS BUILT UP ON THE INTERIOR. RECESSING THE WEATHER RESISTANT SILL PROVIDES A MINIMAL TRANSITION FROM INSIDE TO OUTSIDE WITH EFFECTIVE WEATHER SEALING. IN THIS APPLICATION, THE SILL IS INSTALLED INTO THE SUB FLOOR AND ALLOWS THE INTERIOR FINISH FLOOR TO BE LEVEL WITH THE INTERIOR SILL STOP.



THE ZERO STEP SILL IS OUR PROPRIETARY DESIGN THAT OFFERS A SEAMLESS TRANSITION FOR SAME INTERIOR TO EXTERIOR FLOOR LEVELS. THE CONTINUOUS DRAFT GUARD SEAL ELIMINATES THE NEED FOR DOOR MOUNTED SWEEPS AND EFFECTIVELY CLOSES THE GAP USUALLY FOUND UNDERNEATH THE DOORS BASED ON FLOOR CONDITIONS AND DOOR ADJUSTMENT. WHEN THE DOORS ARE CLOSED, THE DRAFT GUARD IS ROTATED INTO THE RAISED POSITION AND PROTECTS AGAINST WIND DRAFTS AND WEATHER. WHEN THE DOORS ARE OPENED, THE DRAFT GUARD SEAL DROPS DOWN FLUSH WITH THE FINISHED FLOOR AND CREATES THE ULTIMATE INDOOR/OUTDOOR EXPERIENCE. THE ZERO STEP SILL IS RECOMMENDED FOR WEATHER PROTECTED OPENINGS.



THE GUIDE CHANNEL SILL OPTION IS RECOMMENDED FOR INTERIOR APPLICATIONS WHEN FLOOR LEVELS ARE THE SAME. IT IS NOT SUITABLE FOR EXTERIOR USE UNLESS AIR INFILTRATION IS ACCEPTABLE OR THERE IS NO RISK OF WATER INFILTRATION.



THE COMMERCIAL SILL IS ADA COMPLIANT AND IS AN OPTION WHEN INTERIOR AND EXTERIOR FLOOR LEVELS ARE THE SAME AND A MAXIMUM SILL HEIGHT FROM FINISH FLOOR OF 1/2" IS REQUIRED. ADEQUATE OVERHANGS ARE RECOMMENDED TO REDUCE THE RISK OF WATER INFILTRATION.