



CLAD SYSTEMS



FEATURING AN EXTRUDED ALUMINUM EXTERIOR, SOLID LAMINATED WOOD CORE CONSTRUCTION AND A REAL WOOD INTERIOR, OUR **CLAD** SYSTEM WITHSTANDS THE ELEMENTS WITH HIGH ENERGY EFFICIENCY.

CLAD SYSTEMS

WITH OUR PREFERRED NARROW STILE AND RAIL PROFILE, THE **CLAD** SYSTEM HAS A TRADITIONAL YET CONTEMPORARY LOOK, ALLOWING THE PERFECT BALANCE OF LIGHT AND GLASS FOR YOUR SPACE.

THE **CLAD** SERIES FEATURES & BENEFITS:

FEATURES

- 1 3/4" THICK PANELS WITH 2 1/4" OPTION AVAILABLE
- SIGNATURE 3 5/8" STILE & RAIL PROFILE
- 7 1/2" AND 10" BOTTOM RAIL OPTIONS FOR FRENCH DOOR LOOK
- SOLID LVL WOOD CORE CONSTRUCTION
- VERTICAL GRAIN DOUGLAS FIR AND MAHOGANY WOOD SPECIES IN-STOCK OR CUSTOM ORDER ANY SPECIES, INCLUDING FSC CERTIFIED WOODS
- SIMPLE FLUSH BOLT LOCKING WITH A MORE TRADITIONAL LOOK
- SIMULATED DIVIDED LITES (SDL) 1" SCULPTED PROFILE AVAILABLE IN MOST TRADITIONAL & MODERN PATTERNS
- 1/4" TO 3/4" GLAZING
- DISTINCTIVE WHITE AND BRONZE IN-STOCK FINISHES OR CUSTOM KYNAR OR POWDERCOAT TO VIRTUALLY ANY COLOR
- ELEGANT DAILY DOOR HANDLE, TRIMSET AND LOCK HARDWARE WITH COMPATIBLE LOCKBODY

BENEFITS

- HEAVY GAUGE EXTRUDED ALUMINUM CLAD EXTERIOR PROVIDES DURABILITY AND LOW MAINTENANCE
- LESS DOOR FRAME AND MORE GLASS THAN A TYPICAL SWING PATIO DOOR
- PERFECTLY COMPLEMENTS ANY CLAD WOOD WINDOW PACKAGE WITH COLOR MATCHING
- OUR LOCKBODY IS COMPATIBLE WITH MAJOR BRANDS OF TRIMSETS IF YOU WANT TO SUPPLY YOUR OWN TRIMSET
- MAXIMUM ENERGY EFFICIENCY FOR COLD CLIMATES
- COMBINE WITH OUR SCREEN SYSTEMS FOR YEAR ROUND COMFORT

LaCANTINA DOORS SYSTEMS ARE BUILT TO LAST AND FEATURE THE HIGHEST QUALITY HARDWARE FOR EFFORTLESS PERFORMANCE. **LaCANTINA DOORS** FOLDING HARDWARE, HANDLE AND LOCKS, ARE AVAILABLE IN STAINLESS STEEL AND BRONZE FINISHES.

HARDWARE



RODOS MULTI-POINT HANDLE STAINLESS STEEL

RODOS MULTI-POINT HANDLE BRONZE

FLUSH BOLT STAINLESS STEEL

PULL HANDLE STAINLESS STEEL

PULL HANDLE BRONZE

DUAL GLAZED TEMPERED GLASS IS STANDARD ON ALL **LaCANTINA DOOR** SYSTEMS. FOR BETTER ENERGY PERFORMANCE, WE FEATURE CARDINAL'S LoE GLASS INCLUDING LoE-272 AND LoE-366. MOST COMMERCIALY AVAILABLE GLAZING CAN BE USED, INCLUDING TINTED, OBSCURE, LAMINATED AND SINGLE GLAZED. LAMINATED GLASS WITH SGP INTERLAYER CAN BE ADDED FOR SECURITY OR IMPACT PROTECTION. SHOULD YOUR PROJECT REQUIRE CUSTOMIZED GLASS PLEASE CONTACT US TO VERIFY AVAILABILITY.

GLASS



WOOD

LaCANTINA DOORS COMPONENTS FEATURE LAMINATED ENGINEERED CORES FOR PERFORMANCE AND A GENEROUS LAYER OF SOLID STAIN-GRADE WOOD. **LaCANTINA DOORS** IS A TRUE FSC CHAIN OF CUSTODY MANUFACTURER.

LaCANTINA DOORS ARE AVAILABLE IN 2 IN-STOCK WOOD SPECIES.

IN-STOCK WOOD



VERTICAL GRAIN DOUGLAS FIR

MAHOGANY

CUSTOM WOOD

CUSTOM WOOD SPECIES ARE AVAILABLE UPON REQUEST. POPULAR SPECIES INCLUDE PINE, ALDER, OAK, MAPLE, CHERRY AND WALNUT.

COLORS

LaCANTINA DOORS OFFER A WIDE RANGE OF IN-STOCK, OPTIONAL AND CUSTOM COLORS FOR THE EXTERIOR AND INTERIOR ALUMINUM OF YOUR BIFOLDING DOOR SYSTEM.

LaCANTINA DOORS FOLDING DOORS SYSTEMS ARE AVAILABLE IN 2 IN-STOCK COLORS:

IN-STOCK COLORS



WHITE

BRONZE

LaCANTINA DOORS OFFER A WIDE RANGE OF 19 OF THE MOST POPULAR COLORS IN THE MARKETPLACE TODAY:

OPTIONAL COLORS*

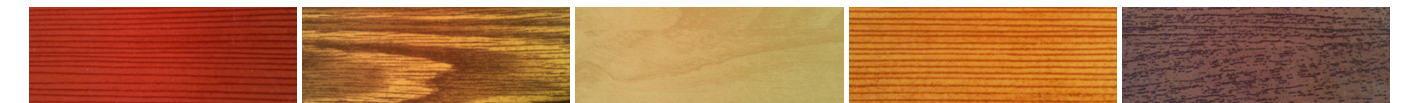


CUSTOM COLORS*

LaCANTINA DOORS OFFERS CUSTOM COLOR MATCHING TO VIRTUALLY ANY COLOR. A 2-COAT 70% KYNAR IS THE STANDARD FINISH. MULTI-COAT, METALLIC AND PREMIUM POWDERCOAT FINISHES CAN BE SPECIFIED FOR YOUR PROJECT NEEDS.

THESE 6 POPULAR DECORAL WOOD GRAIN POWDERCOAT FINISHES ARE AVAILABLE. CONTACT US FOR THE COMPLETE RANGE.

REAL WOOD LOOK



RED DOUGLAS FIR

LIGHT NATURAL OAK

LIGHT MAPLE

LIGHT DOUGLAS FIR

LIGHT WALNUT



DARK CHERRY

*ACTUAL COLORS WILL VARY FROM THE PRINT. PLEASE REQUEST PAINT SWATCH SAMPLES

SIZING

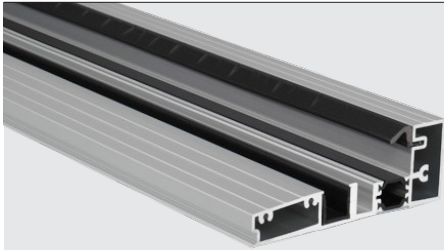
OUR BIFOLD DOOR SYSTEMS ARE AVAILABLE IN THE MOST POPULAR SIZES AND OPENINGS. **LaCANTINA DOORS** POPULAR STANDARD SIZES ARE 7' AND 8' TALL AND 9', 12', 15' AND 18' WIDE WITH A 35" PANEL WIDTH. WE SPECIALIZE IN CUSTOM "MADE TO MEASURE" SYSTEMS WHICH ARE AVAILABLE UP TO 52' WIDE AND 10' TALL WITH A MAXIMUM PANEL WIDTH OF 39".

CONFIGURATIONS

LaCANTINA DOORS BIFOLD DOOR SYSTEMS OFFER A RANGE OF CONFIGURATIONS UP TO 16 PANELS, 8 IN EACH DIRECTION, INCLUDING A 90° ZERO POST SYSTEM. VISIT WWW.LACANTINADOORS.COM FOR THE COMPLETE CONFIGURATION CHART AND LISTING OR CONTACT US TO DISCUSS HOW OUR DOOR SYSTEMS CAN MEET YOUR PROJECT NEEDS.

SILL CONSIDERATIONS

LaCANTINA DOORS OFFERS A CHOICE OF SILL OPTIONS THAT PERFORM FOR A RANGE OF CONDITIONS. IDENTIFY WHAT SILL OPTION AND FLOOR TRANSITION BEST MEET YOUR NEEDS.



THE **WEATHER RESISTANT** SILL IS OUR STANDARD SILL OPTION AND PROVIDES EFFECTIVE WEATHER SEALING FOR EXTERIOR APPLICATIONS SIMILAR TO RAISED SILLS TYPICAL OF SLIDING OR SWINGING PATIO DOORS. THE SILL IS INSTALLED ON TOP OF THE SUB FLOOR AND THEN THE FINISHED FLOOR IS BUILT UP ON THE INTERIOR. RECESSING THE WEATHER RESISTANT SILL PROVIDES A MINIMAL TRANSITION FROM INSIDE TO OUTSIDE WITH EFFECTIVE WEATHER SEALING. IN THIS APPLICATION, THE SILL IS INSTALLED INTO THE SUB FLOOR AND ALLOWS THE INTERIOR FINISH FLOOR TO BE LEVEL WITH THE INTERIOR SILL STOP.



THE ZERO STEP SILL IS OUR PROPRIETARY DESIGN THAT OFFERS A SEAMLESS TRANSITION FOR SAME INTERIOR TO EXTERIOR FLOOR LEVELS. THE CONTINUOUS DRAFT GUARD SEAL ELIMINATES THE NEED FOR DOOR MOUNTED SWEEPS AND EFFECTIVELY CLOSES THE GAP USUALLY FOUND UNDERNEATH THE DOORS BASED ON FLOOR CONDITIONS AND DOOR ADJUSTMENT. WHEN THE DOORS ARE CLOSED, THE DRAFT GUARD IS ROTATED INTO THE RAISED POSITION AND PROTECTS AGAINST WIND DRAFTS AND WEATHER. WHEN THE DOORS ARE OPENED, THE DRAFT GUARD SEAL DROPS DOWN FLUSH WITH THE FINISHED FLOOR AND CREATES THE ULTIMATE INDOOR/OUTDOOR EXPERIENCE. THE ZERO STEP SILL IS RECOMMENDED FOR WEATHER PROTECTED OPENINGS.



THE GUIDE CHANNEL SILL OPTION IS RECOMMENDED FOR INTERIOR APPLICATIONS WHEN FLOOR LEVELS ARE THE SAME. IT IS NOT SUITABLE FOR EXTERIOR USE UNLESS AIR INFILTRATION IS ACCEPTABLE OR THERE IS NO RISK OF WATER INFILTRATION.



THE COMMERCIAL SILL IS ADA COMPLIANT AND IS AN OPTION WHEN INTERIOR AND EXTERIOR FLOOR LEVELS ARE THE SAME AND A MAXIMUM SILL HEIGHT FROM FINISH FLOOR OF 1/2" IS REQUIRED. ADEQUATE OVERHANGS ARE RECOMMENDED TO REDUCE THE RISK OF WATER INFILTRATION.